

Table of contents


How to customize Graphic user interface.....	2
Options window	2
Manage windows and save layout.....	2
Customise the LiveBoard.....	3
Customise background tab.....	3
Customise background button.....	3
Custom the fixtures manager.....	4
Lock options.....	5

How to customise Graphic User Interface

Improve your user experience by customising the software display.

Define the default display settings when launching the software. Show or hide active windows, change their size and location, and save your favourite layouts. Customise the LiveBoard elements to match your project. Import a lighting plot to simplify your lightings management.

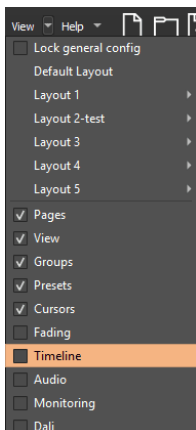
Options window


Click on  to open the options window.

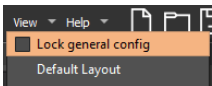


select the checkboxes to define your preferences, when launching the software.

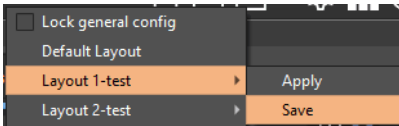
Manage windows and save layout



In the **View** menu, select or unselect checkboxes to display or hide windows. Enable window resizing when the pointer is positioned over window borders. Unpin the window by clicking the pin icon, expand to full-screen mode when required. 



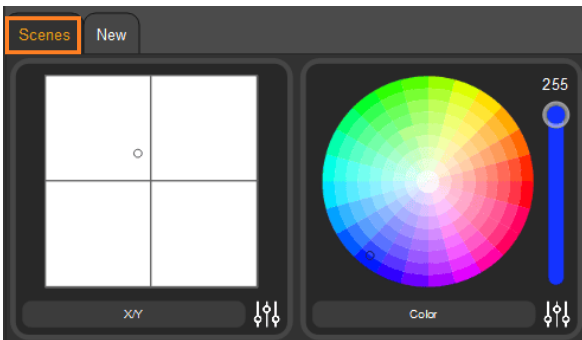
Lock the general configuration by ticking the box.



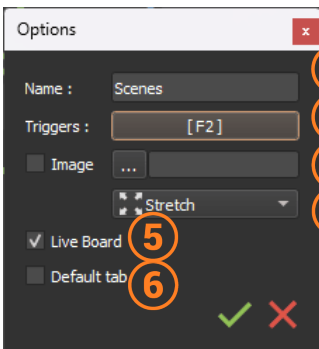
Save and apply up to 5 layouts.

Customise the LiveBoard

Customise the tab background



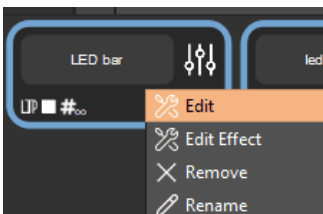
Double click on the scene tab to display the option window.



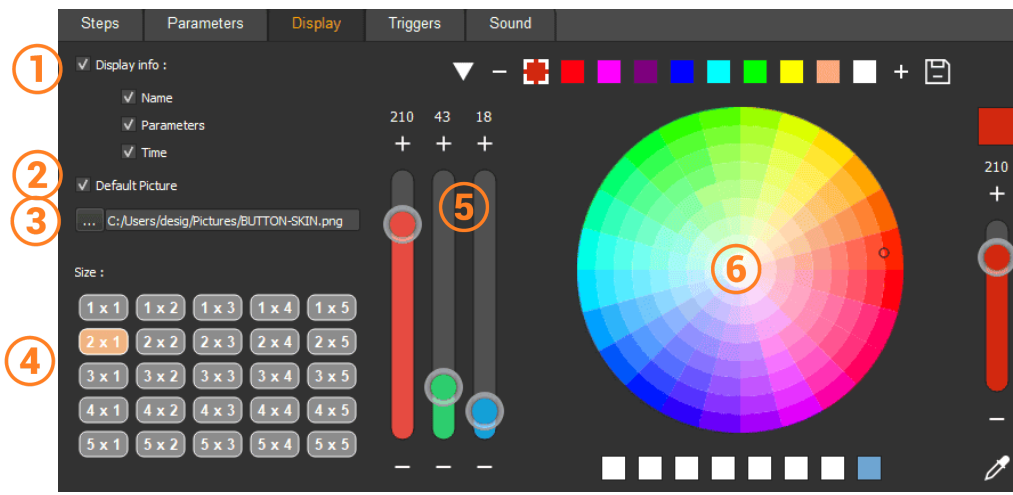
1. Modify the name tab
2. Choose triggers
3. Select the checkbox and upload a picture
4. Adjust the picture
5. Select or unselect the checkbox to display or hide the tab on the LiveBoard
6. Select the checkbox to display the tab when the software opens

Confirm before closing the window.

Customise background button



In the edit panel mode, right click on the scene button and edit it. Click on display tab to modify the background picture after unselect the checkbox



- 1- Select to display all the information or each of them independently.
- 2- unselect default display to upload custom picture
- 3- Upload custom picture
- 4- Select the button ratio
- 5- Adjust RGB values
- 6- Select the button outline colour

Custom the fixtures manager



Click on the icon  to access the option window or double-click on the tab name.

- 1- Tab name
- 2- Set tab selection trigger
- 3- Set previous/next fixture selection trigger
- 4- Link a fixture tab with a scene tab
- 5- Set the size of fixtures viewer area in pixels
- 6- Grid display
- 7- Enables grid magnetism
- 8- selection color
- 9- Set the selection outline size
- 10- Set background color
- 11- Display/hide selected picture
- 12- Adjust display picture
- 13- Upload background picture
- 14- Confirm your setup or quit

Lock options



In the “Lock” tab of the Options window, select the checkboxes to lock specific actions in the software sections. Then set a password to restrict access. Enter your password to unlock.